

Orchard Theatre CASE STUDY

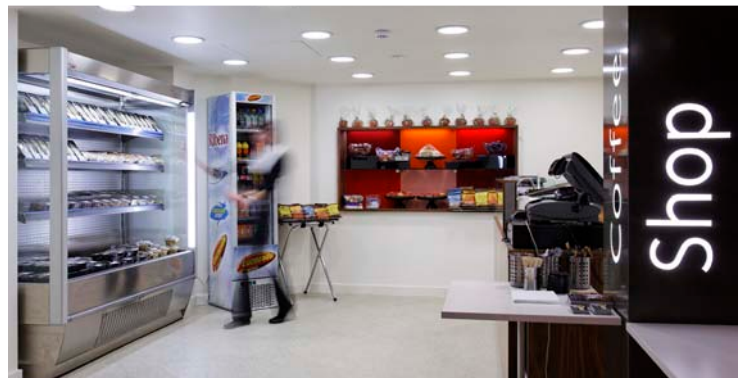
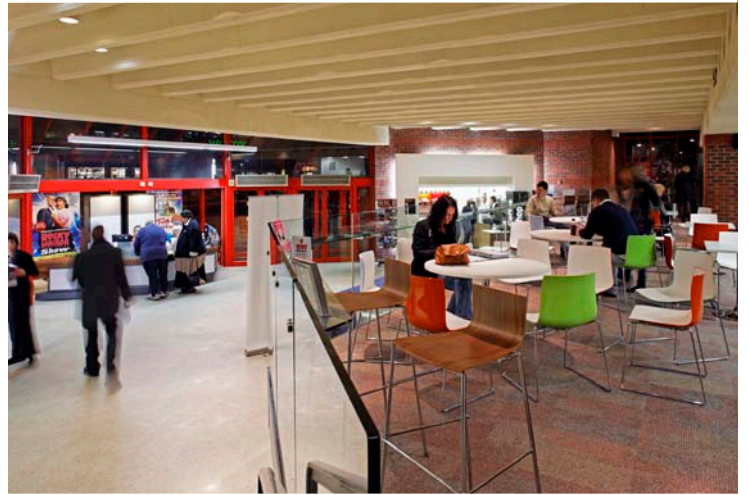


Timescale

8 Weeks

Architect

RHWL Architects



The front-of-house areas of HQ Theatres' Orchard Theatre were stripped out and refurbished including the upper and lower bars, associated seating areas and ground floor confectionary and ticket office space. New installations included a bespoke glazed balustrade on the ground floor, counters and display units in the cafe and confectionary area and bars and under counter equipment in the stalls and Orchard Bar. Partitions were installed to create back-of-house storage and movable joinery units to form a flexible restaurant space on the first floor. The works also included new lighting throughout the foyers and bars, plus feature lighting and signage. A newly constructed ticket counter was installed on the ground floor to facilitate increased ticket sales and maximise space.

vivid