

# Bromley College CASE STUDY

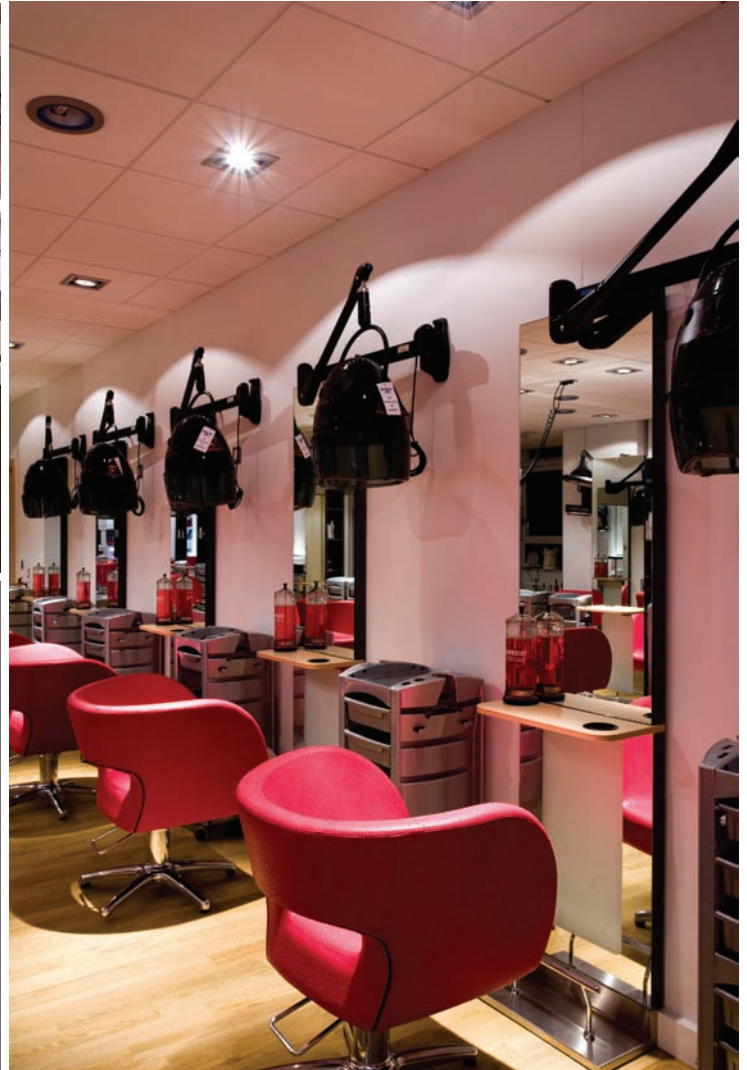


**Timescale**  
8 Weeks

**Architect**  
Pellings

**Quantity Surveyor**  
Huntley Cartwright

**Project Manager**  
Tribal



The Hair and Beauty Department at Bromley College of Further and Higher Education was stripped out and refurbished. New salons were formed with steam and shower room, washing and dryer room, staff area and reception. Hairwash stations and vanity units were installed plus new treatment beds and curtain dividers. Hairdryers were installed to the new blockwork walls, and storage units to cater for staff and student needs. The works included new doorsets, soft flooring, partitions, air-conditioning and extract ductwork, electrical power and lighting to suit the newly formed space, and suspended ceilings to accommodate new lighting and concealed services.

vivid